

19 February 2026

# Media Release

---

## 3 RECORDS BROKEN AT GDM'S BANSHEE PROJECT

### Continuity of Mineralisation

Great Divide Mining Ltd (ASX:GDM) has welcomed record drill results from its Coonambula site, by its JV partner Dart Mining NL (ASX:DTM).

The latest diamond drilling results (CBADD003–CBADD010) have delivered the highest gold, silver and antimony assays recorded to date at Banshee, including:

- Gold @ 20.2 g/t
- Silver @ 234 g/t
- Antimony @ 44.6% Sb

Broader mineralised zones include 9.0m @ 2.67 g/t Au, 16.8 g/t Ag and 5.8% Sb from 32.5m confirming Banshee as a robust Au–Ag–Sb polymetallic system, with demonstrated grade continuity.

“Importantly, mineralisation is now defined over more than 320 metres of strike and remains open both along strike and at depth,” said GDM’s CEO Justin Haines, “Shallow intersections, including high-grade mineralisation within 10 metres of surface, further enhance the potential scale of the system, with clear implications for future commercial development.”

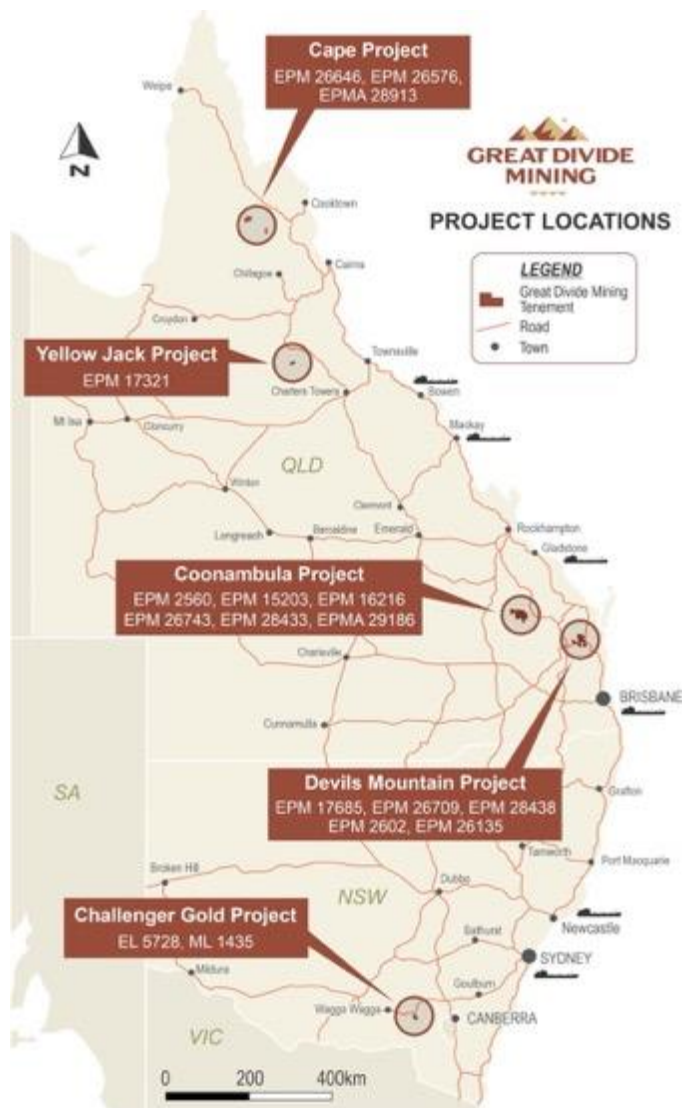
“These results are highly encouraging for the Coonambula Joint Venture and demonstrate the growing scale and grade potential at Banshee,” said GDM’s Chairman, Paul Ryan.

“We’re delighted with the pace and progress of the JV,” Mr Ryan continued, “Record gold, silver and antimony assays, combined with strong continuity, firmly support the pathway toward a maiden Mineral Resource Estimate.”

Dart Mining has completed 2,594 metres of its planned 4,000 metre earn-in program to secure up to a 51% interest in the project. Remaining assays are pending, with further drilling and metallurgical studies underway to support future resource definition.

“Coonambula remains one of Queensland’s most prospective historical antimony-gold fields, with a 5km prospective strike corridor and multiple high-grade historical workings,” said Haines.

ENDS



*GDM's Coonambula project continues to punch above it weight class.*

For further information:

Justin Haines, CEO

e [justin.haines@greatdividemining.com.au](mailto:justin.haines@greatdividemining.com.au)

m +61 (0)418 876 420

**Great Divide Mining Ltd (ASX: GDM)**

Great Divide Mining is an Australian Gold, Antimony and critical metals miner, explorer, developer and producer with five projects across 17 tenements (including two in application). GDM's focus is on operating producing assets within areas of historical mining and past exploration with nearby infrastructure, thus enabling rapid development. Through a staged exploration and development programme, GDM intends to generate cash flow from its initial projects to support further exploration across its portfolio of highly prospective tenements.

<https://greatdividemining.com.au/>